



The Mediation and
Communication Training
Specialists.

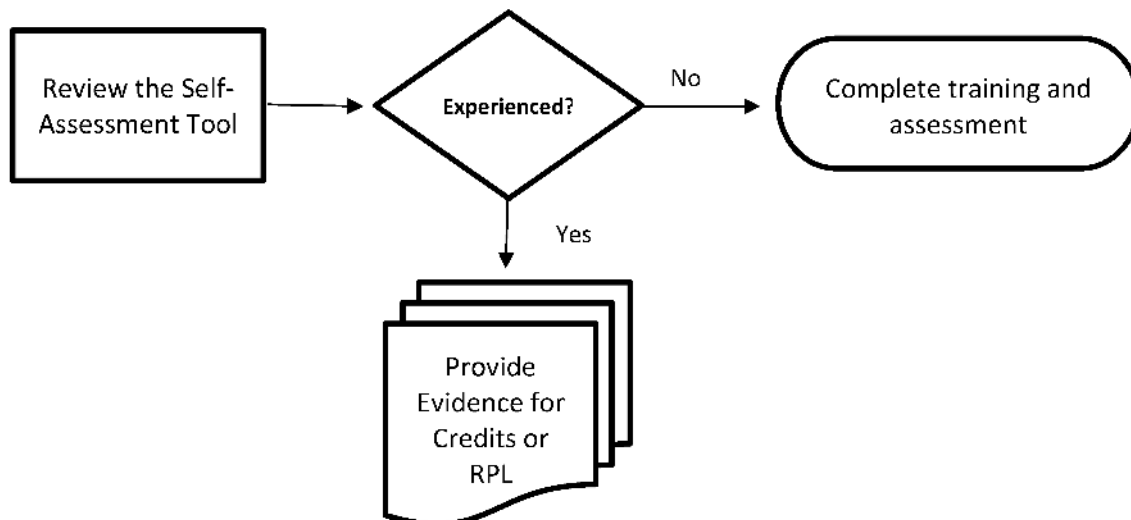
1300 788 533
office@mediationinstitute.edu.au
www.mediationinstitute.edu.au
CHC81115 Grad. Dip. FDR Training
delivered in partnership with
Inspiritive RTO 21178

Self-Assessment: CHCDFV012 Make safety plans with people who have been subjected to domestic and family violence

This tool will provide you with the opportunity to self-review your current skills and knowledge in order to apply for credits or recognition of prior learning for this unit towards the full CHC81115 - Graduate Diploma of Family Dispute Resolution.

Decision Tree

Recognition of Prior Learning (RPL) may be granted if your evidence is recent and covers the full assessment requirement of the unit.



Please provide your contact details so we can discuss your application for credits with you.

| | |
|-----------------------------------|---|
| Name | |
| Employer | |
| Mobile | |
| Email | |
| Schedule an RPL discussion | http://live.mediationinstitute.edu.au/online-scheduling?service=381f2d10 |

Self-Assessment - CHCDFV012 Make safety plans with people who have been subjected to domestic and family violence

Unit and Elements

CHCDFV012: Make safety plans with people who have been subjected to domestic and family violence

1. Assess vulnerabilities and their impact on safety
2. Implement safety planning procedures
3. Review safety planning procedures

Self-Assessment

| | | | |
|---|-------------------------|------------------------|------------------------|
| <p>Please answer the following questions honestly. The purpose of this task is to help you and your supervisor to identify and prioritize your learning needs. As there have been many changes to this field of work over time your experience should be RECENT (currently performing this task or not more than 12 months ago) to tick Very Experienced</p> | <i>Very experienced</i> | <i>Some experience</i> | <i>Never done this</i> |
|---|-------------------------|------------------------|------------------------|

| CHCDFV012 Make safety plans with people who have been subjected to domestic and family violence | | | |
|---|--|--|--|
| 1 I have helped clients to assess their vulnerabilities in relation to domestic and family violence and their impact on their safety | | | |
| 2 I helped clients to develop a safety plan tailored to their individual situation | | | |
| 3 I have reviewed safety planning procedures with clients and helped them to modify their plans and proposed improvements to safety planning procedures to the organisation | | | |

Evidence

| CHCDFV012 Make safety plans with people who have been subjected to domestic and family violence | |
|---|--------------------|
| Please indicate the type of evidence you can provide | <i>Can provide</i> |
| Letter from your employer or other evidence that you have assisted at least three (3) users of violence to complete safety plans. | |
| Letter from your employer or other evidence that you have reviewed at least two (2) safety plans with clients and assisted them to revise their plans | |
| Evidence that you have participated in discussions on how to improve safety planning. Usually from an employer. | |
| CV demonstrating that you have worked in a job function where you completed safety plans with clients | |